



AVL SANTORIN MX 2™

Unleash data power



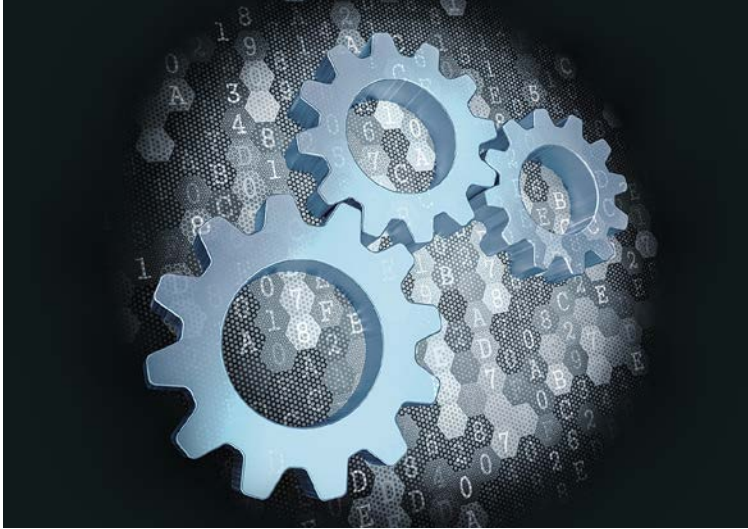
AVL SANTORIN MX 2™ – Unleash data power

THE ADDED VALUE

AVL SANTORIN MX 2™ is supporting you to manage, secure and distribute your knowledge in the development process. Besides the full automation of data processing activities you can easily find and manage all relevant data in a much shorter period of time. This results in a consistent information flow, in order to be one step ahead.

- Intelligent integration, qualification and harmonization of heterogeneous data sources
- Central ASAM ODS compliant management over the complete lifecycle for revision safety and traceability
- Time savings through quick and unified navigation, smart search and open provisioning of data
- Standardized, efficient and automated server-based data processing and reporting





THE CHALLENGE

Developing and securing a growing number of vehicle variants with increasing complexity within shorter periods of time are major challenges of the automotive industry. As a consequence, the amount of data produced during validation and verification has risen dramatically over the years. Additionally, new regulations for traceability of data, product liability and the handling of large volumes of data – so-called “big data” – are key topics for all players in the automotive industry.

THE SOLUTION

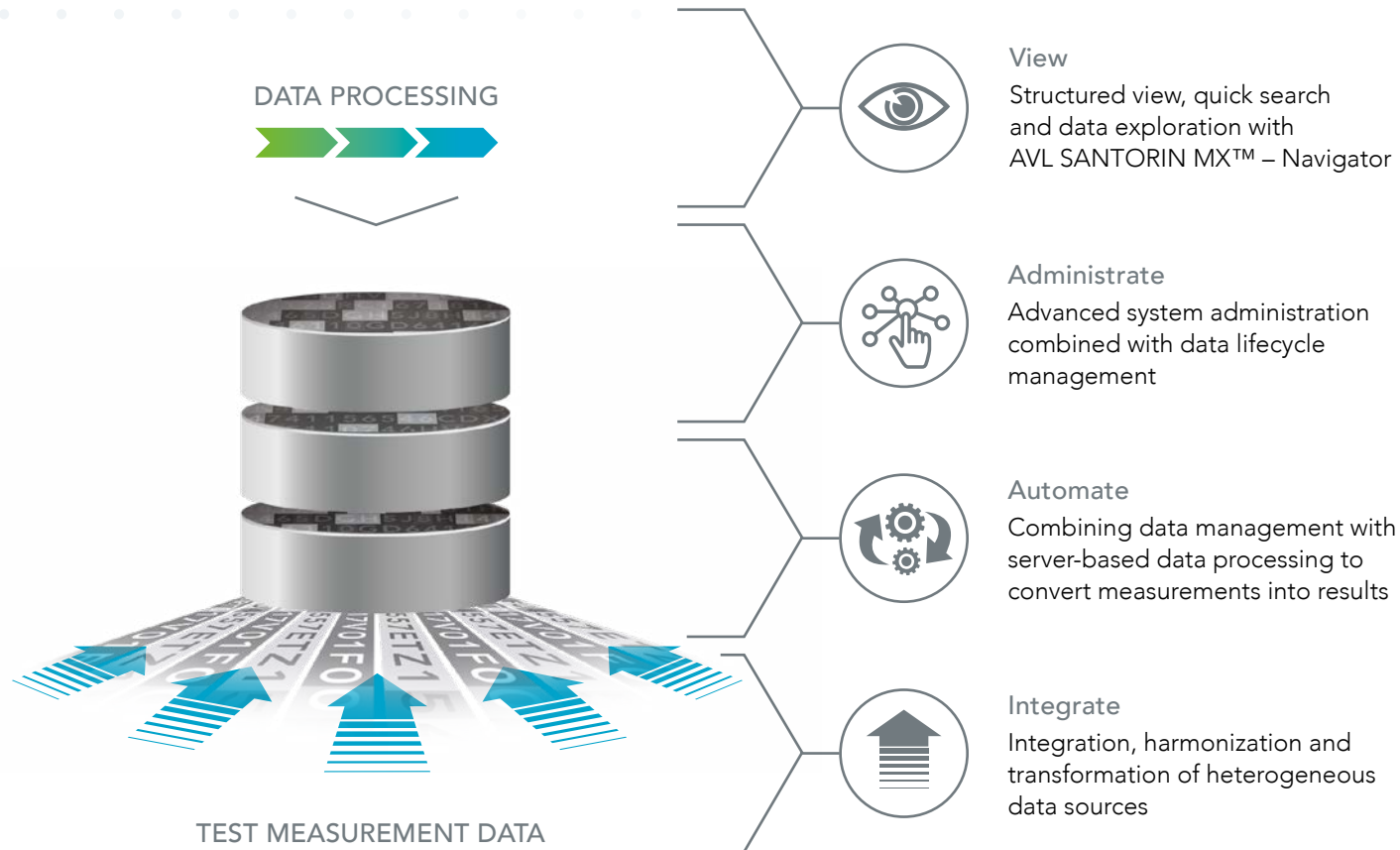
AVL SANTORIN MX 2™ is an intelligent data management solution for harmonized data integration, search, exploration, and automated processing, which meets today's and future challenges. No matter where data are generated, the system stores heterogeneous data in a consistent and synchronized way. It logically connects data from various sources and enables a harmonized data view.

In compliance with the industry standard ASAM ODS, AVL SANTORIN MX 2™ is a unified and intelligent data integration platform, open for third-party systems.

Data quality, time saving and test productivity are the highlights that our solution brings to your business needs.



SOLUTION OVERVIEW



View

Structured view, quick search and data exploration with AVL SANTORIN MX™ – Navigator

Administrate

Advanced system administration combined with data lifecycle management

Automate

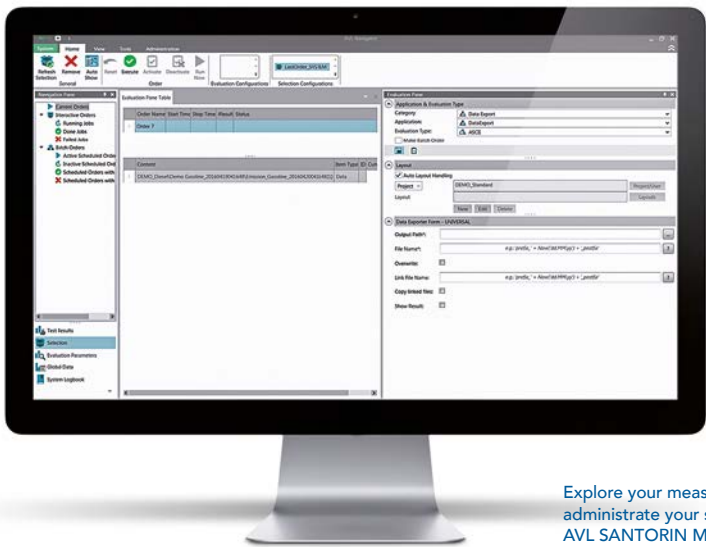
Combining data management with server-based data processing to convert measurements into results

Integrate

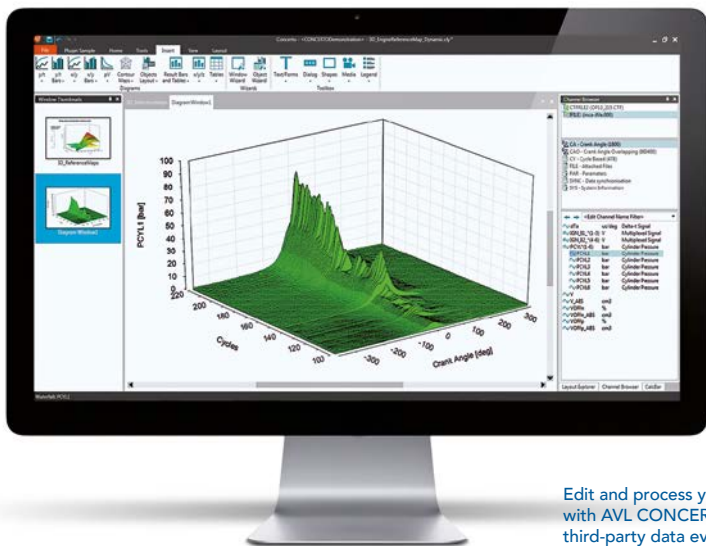
Integration, harmonization and transformation of heterogeneous data sources

TECHNICAL DATA

| | |
|-------------------------------------|--|
| Server Operation System | Windows Server 2016 Windows 7 Enterprise Windows 10 Enterprise |
| Database | Oracle 12: 12.2.0.1 |
| Security | ASAM ODS based security |
| Supported Standards & Prerequisites | ASAM ODS data model |



Explore your measurement data and administrate your server solution with AVL SANTORIN MX™ – Navigator.



Edit and process your data immediately with AVL CONCERTO 5™ or any third-party data evaluation tool.

HIGHLIGHTS OF AVL SANTORIN MX 2™ COMPONENTS

View

- Data exploration and provisioning for AVL/non-AVL evaluation tools
- Search in metadata

Administrate

- Batch-based data cleaning and archiving
- Data integration management and surveillance
- User and role management

Automate

- Batch data processing with AVL CONCERTO 5™

Integrate

- Intelligent measurement data integration of heterogeneous data sources
- Norm name mapping and ATF(X) file conversion
- Domain specific database schema on one database
- ASAM ODS mixed-mode handling



AVL Team SUITE™

SUCCESS BASED ON INTERPLAY

Combine your strong team flexibly out of compatible, complementary players to meet your needs.

www.avl.com/meet-the-team

FOR FURTHER INFORMATION PLEASE CONTACT:

AVL List GmbH, Hans-List-Platz 1, 8020 Graz, Austria
Phone: +43 316 787-0, fax: +43 316 787-400, email: datamanagement@avl.com, www.avl.com/santorin